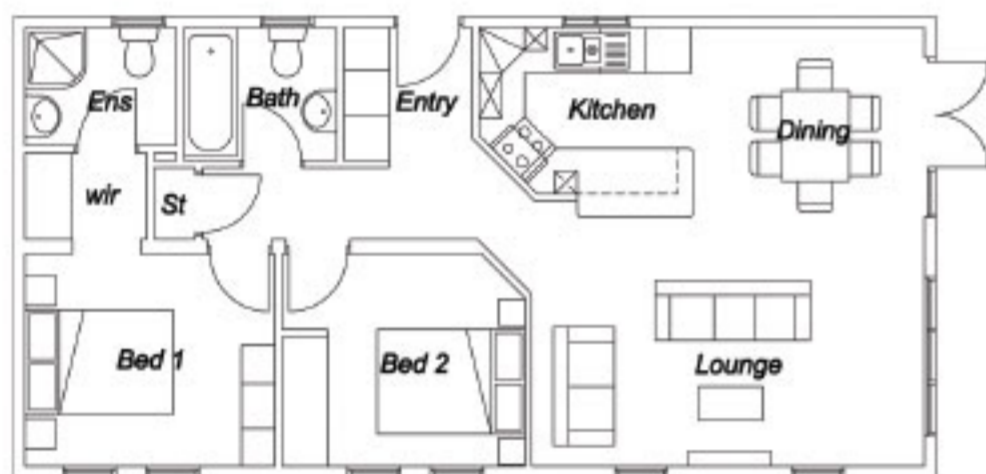
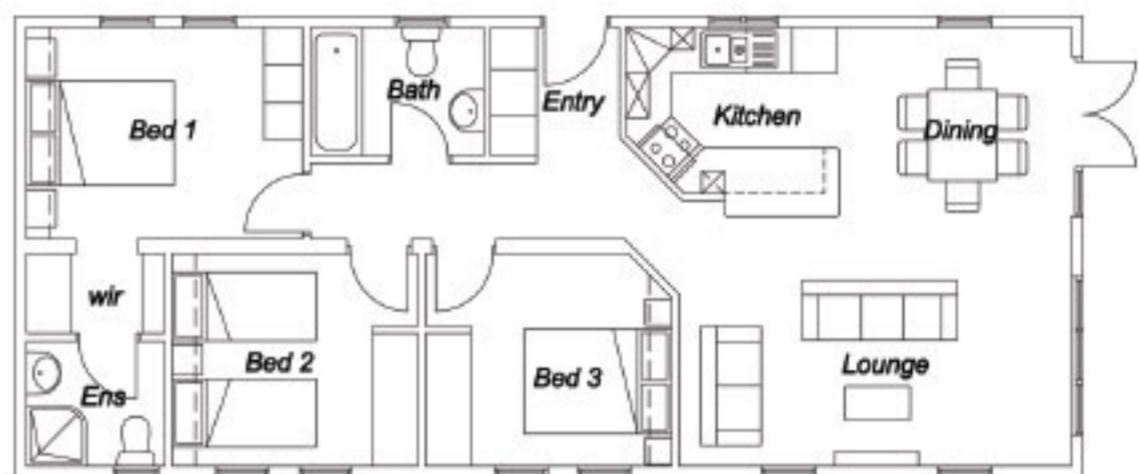


Beech Lodge 40 x 22 ft



Beech Lodge 40 x 20 ft



Beech Lodge 46 x 20 ft

## Interior

- Constructed to BS 3632
- Condensing combi gas boiler
- 5 Ring gas hob, Built in double electric oven & microwave
- High gloss kitchen with granite worktop
- Integrated fridge/freezer, dishwasher and washer/dryer
- Chrome handles, switches and low energy spots
- Feature wallpaper to lounge
- 3+2 lounge suite and coffee table
- Wall mounted focal fire
- Dining table & 6 Chairs
- Mirrored slide robes and floating bedside lockers
- Interior Oak shaker doors
- Granite top vanity to family bathroom
- Body spray shower to en-suite
- Half height tiling to bathroom & en-suite, with full height to shower in ensuite and over bath
- Colour co-ordinated curtains, blinds, bedding and cushions
- Carpet/ laminate flooring throughout
- Chrome Towel rail to bathroom & en-suite
- Velux rooflight to Kitchen
- Flush internal joints

## Exterior

- Optional Canexel or redwood cladding
- Wood effect uPVC doors and windows with low e glass
- Wood effect uPVC fascia & soffits
- Dormer gable over side door
- 700mm overhang to front gable & integrated spots
- Peak windows & doors to front gable
- Slot windows to lounge, dining & bedrooms

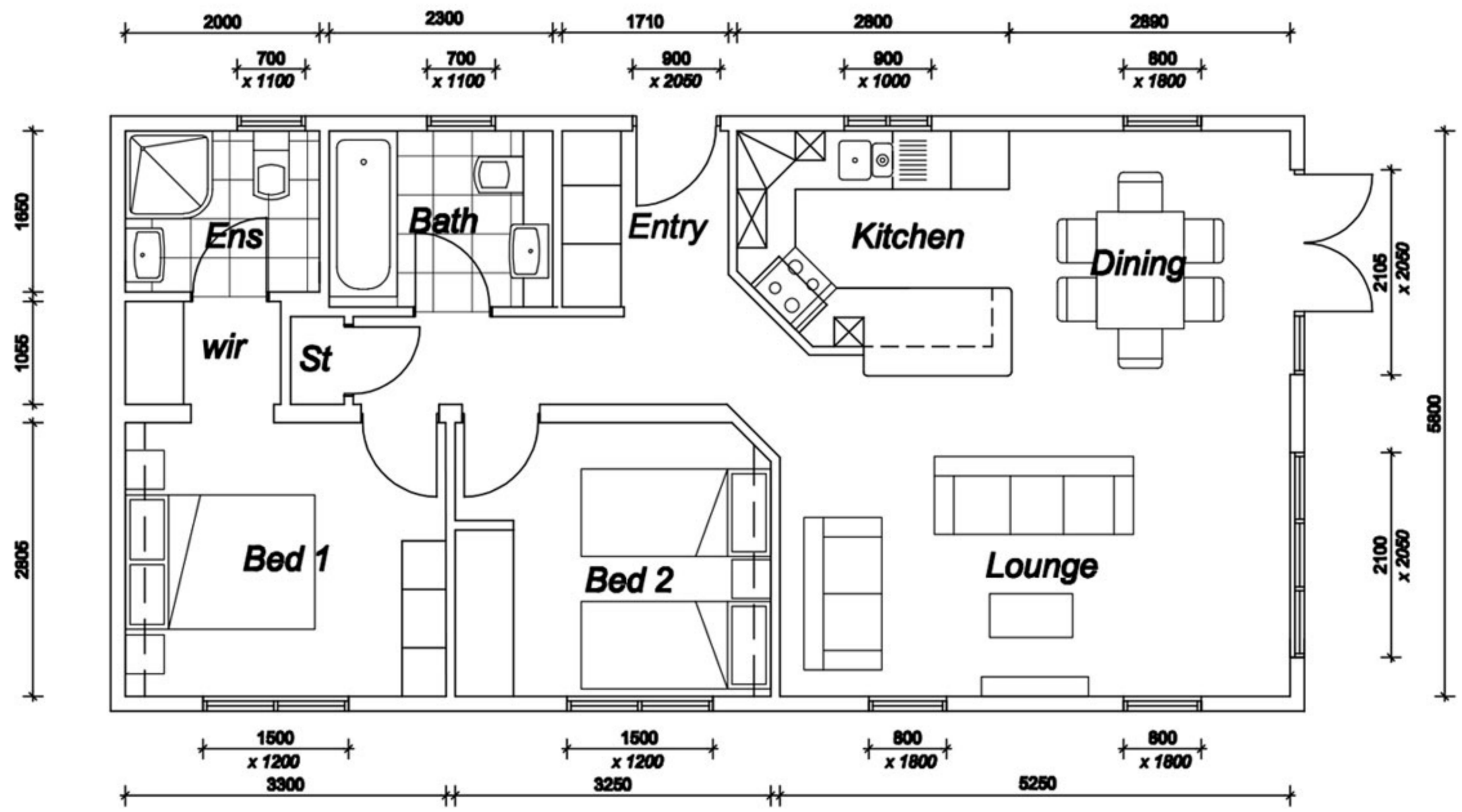
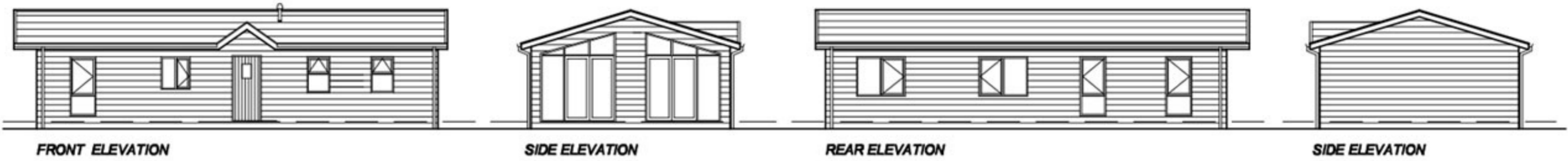
## Optional Extras

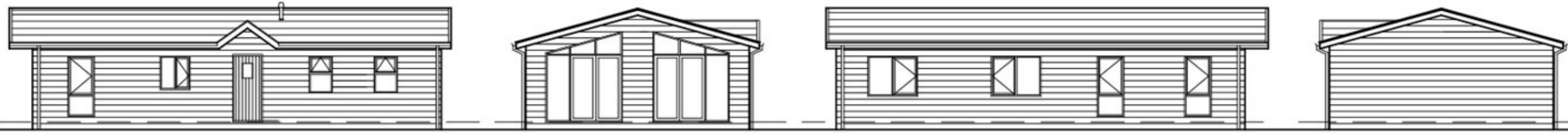
- Additional velux rooflights
- External tap
- External powerpoint

# Beech Lodge

## Features & Optional Extras:

The Beech Lodge twin comes in 16ft, 20ft & 22ft widths and lengths to suit all sites and in 2 or 3 bedroom arrangements.



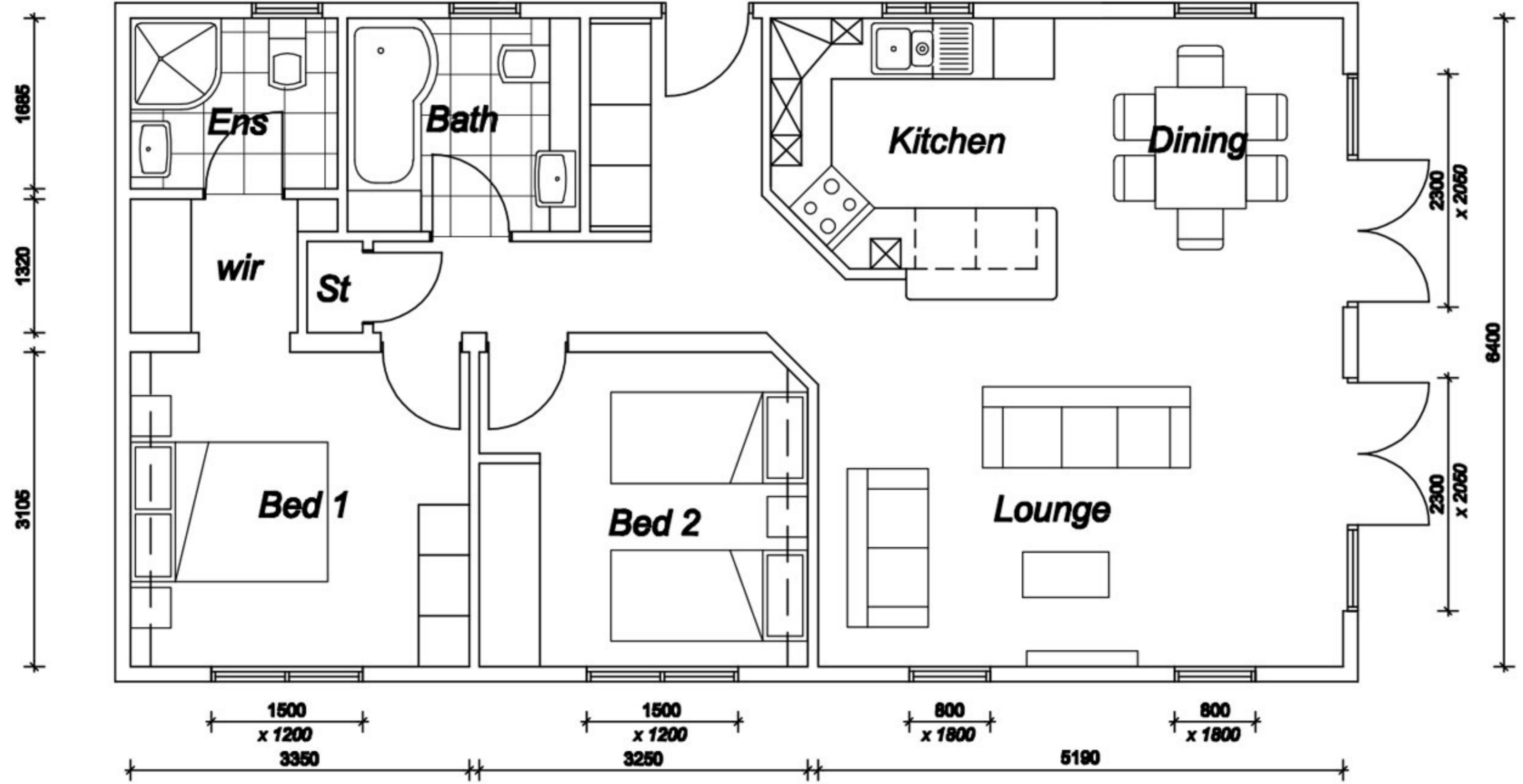
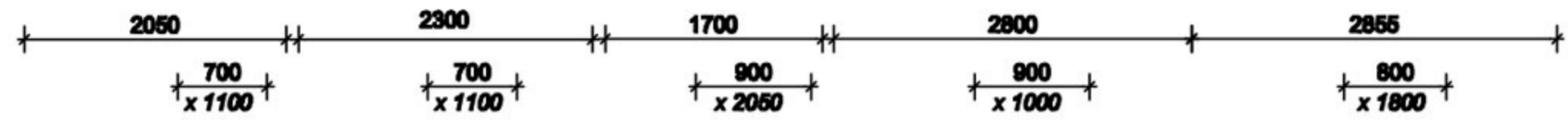


FRONT ELEVATION

SIDE ELEVATION

REAR ELEVATION

SIDE ELEVATION



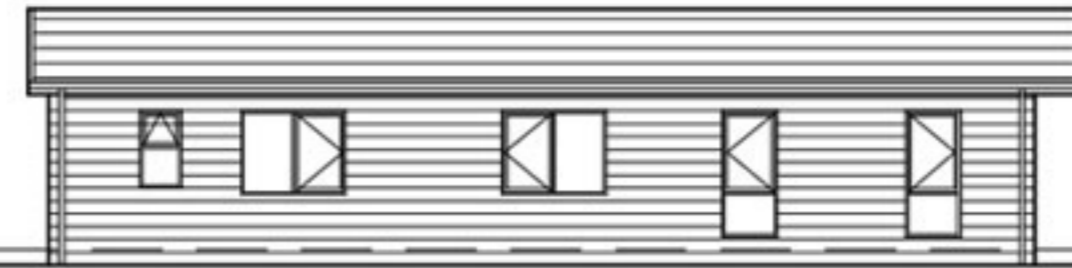
40 x 22ft



FRONT ELEVATION



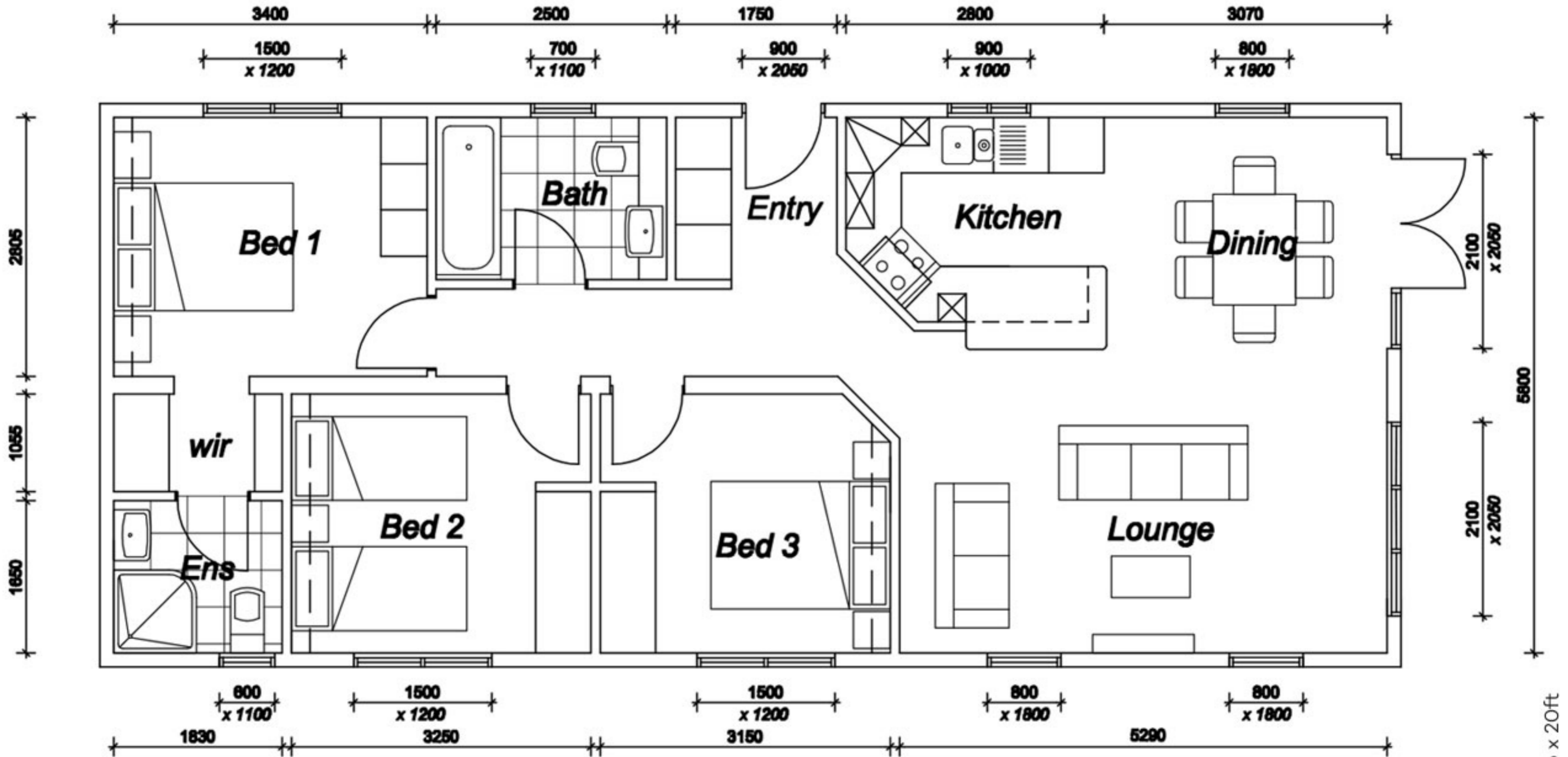
SIDE ELEVATION



REAR ELEVATION



SIDE ELEVATION



46 x 20ft