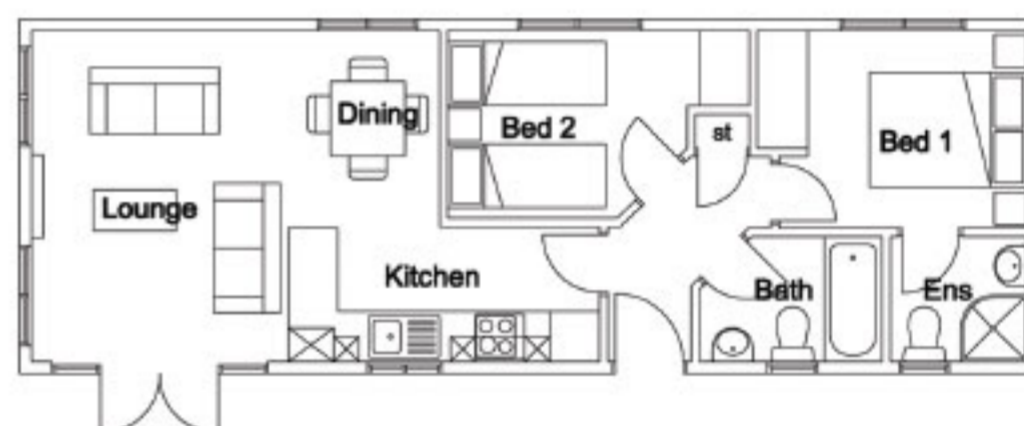


Oakdale Lodge 46 x 14 ft



Oakdale Lodge 40 x 14 ft



Oakdale Lodge 40 x 14 ft

Interior

- Constructed to BS 3632
- Condensing combi gas boiler
- 4 Ring gas hob & built in single electric oven
- Standard kitchen with laminate worktop
- Integrated fridge/freezer, dishwasher
- Chrome handles, and low energy spots
- Feature wallpaper to lounge
- 3+2 lounge suite and coffee table
- Wall mounted focal fire
- Dining table & 6 Chairs
- Built-in bedroom furniture to Master bedroom and bed 2 with bedside lockers
- Interior white or pine panel doors
- Pedestal basins with Bathroom cabinets over with integrated light and shaver point
- Shower to en-suite
- Half height tiling to bathroom & ensuite with full height to shower in ensuite and over bath
- Colour co-ordinated curtains, blinds, and cushions
- Carpet/ laminate flooring throughout
- Flush internal joints

Exterior

- Optional Canexel or redwood cladding
- Wood effect uPVC doors and windows with low e glass
- Wood effect uPVC fascia & soffits
- 700mm overhang to front gable & integrated spots
- Flat head windows & doors to front gable
- Deep windows to lounge, standard height to bedrooms

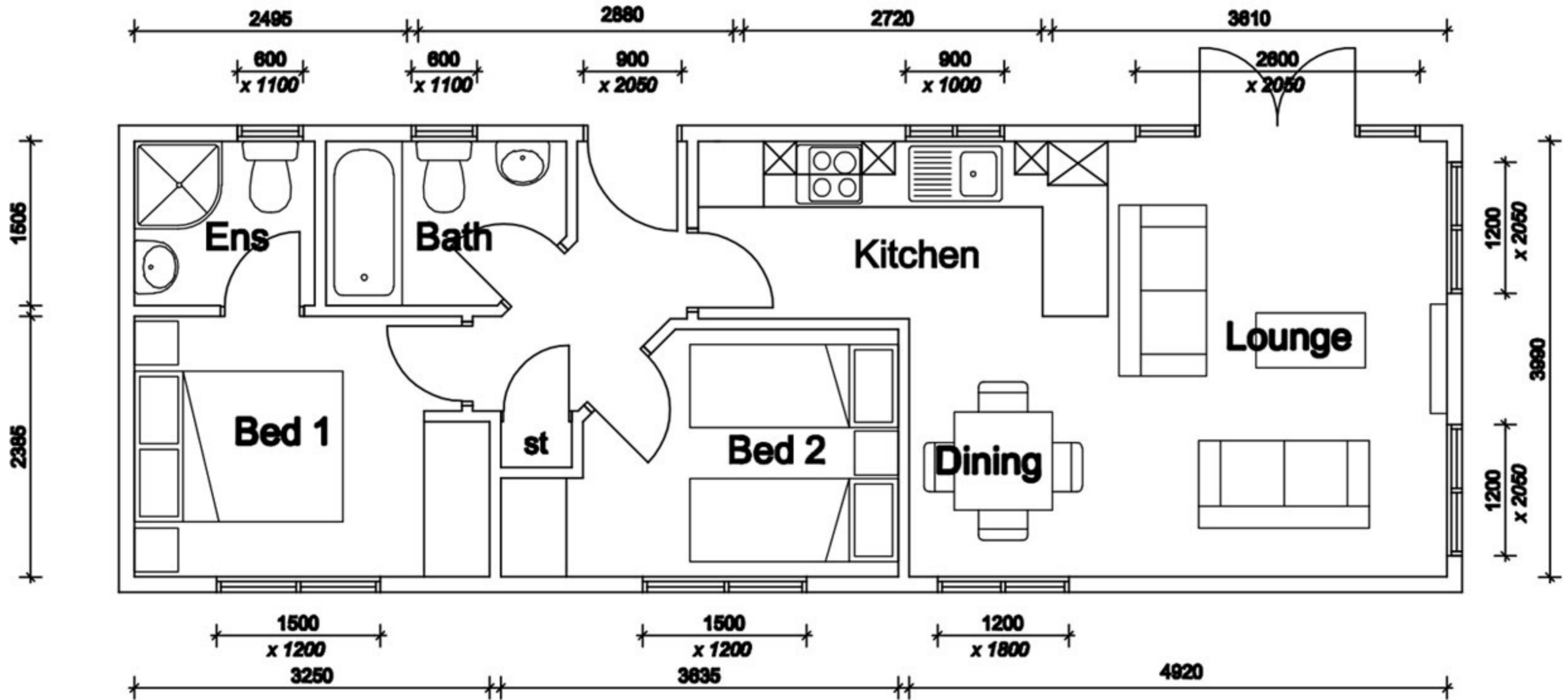
Optional Extras

- Additional velux rooflights
- External tap
- External powerpoint
- Built-in microwave
- Integrated Washer/Dryer
- Vanity to Bathroom
- Additional tiling to bathroom & en-suite
- Shower over bath
- Colour co-ordinated bedding
- Built-in electric double oven

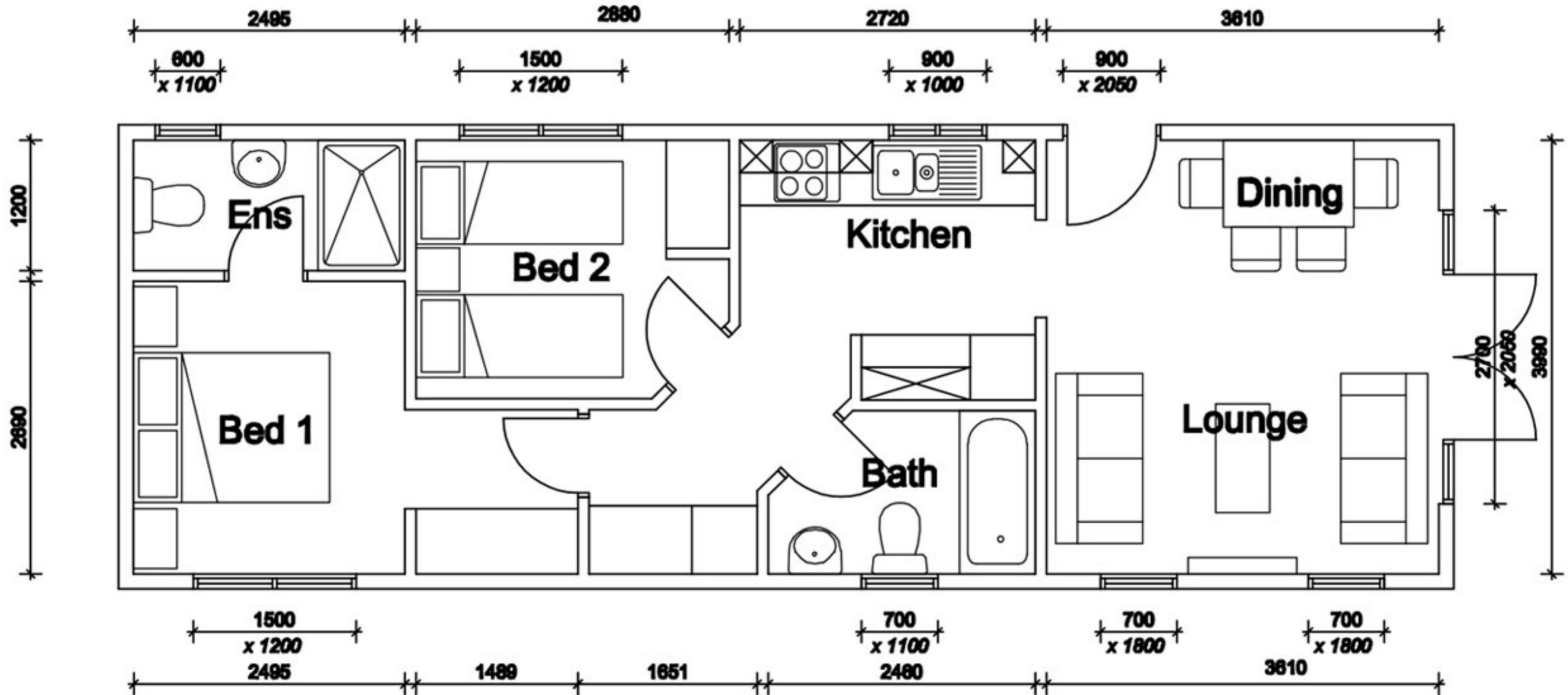
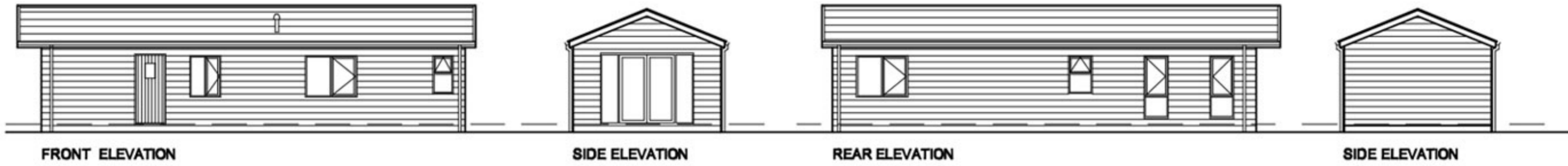
Oakdale Lodge

Features & Optional Extras:

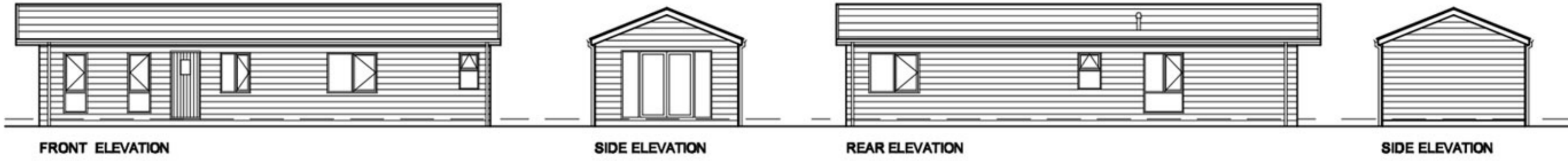
The Elm Lodge twin comes in 20ft & 22ft widths and lengths to suit all sites and in 2 or 3 bedroom arrangements.



40 x 14ft



40 x 14ft

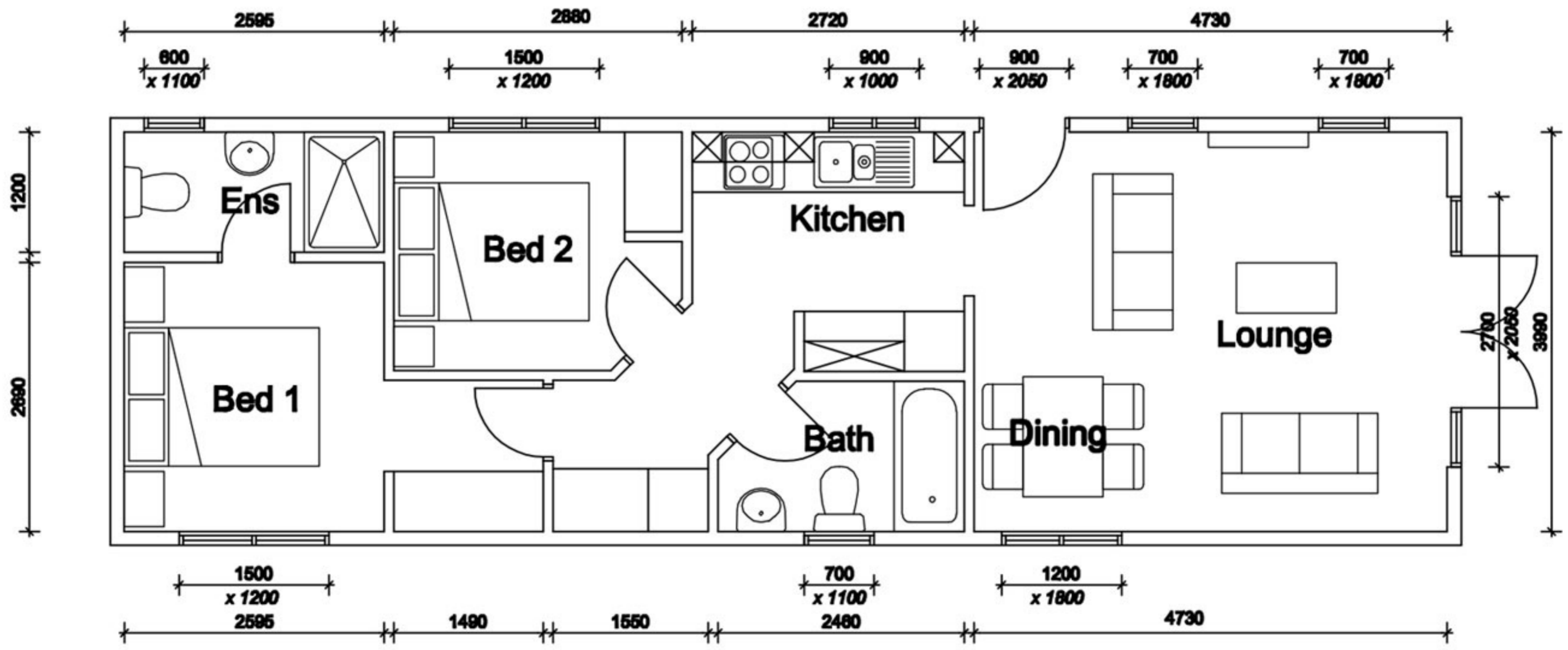


FRONT ELEVATION

SIDE ELEVATION

REAR ELEVATION

SIDE ELEVATION



46 x 14ft