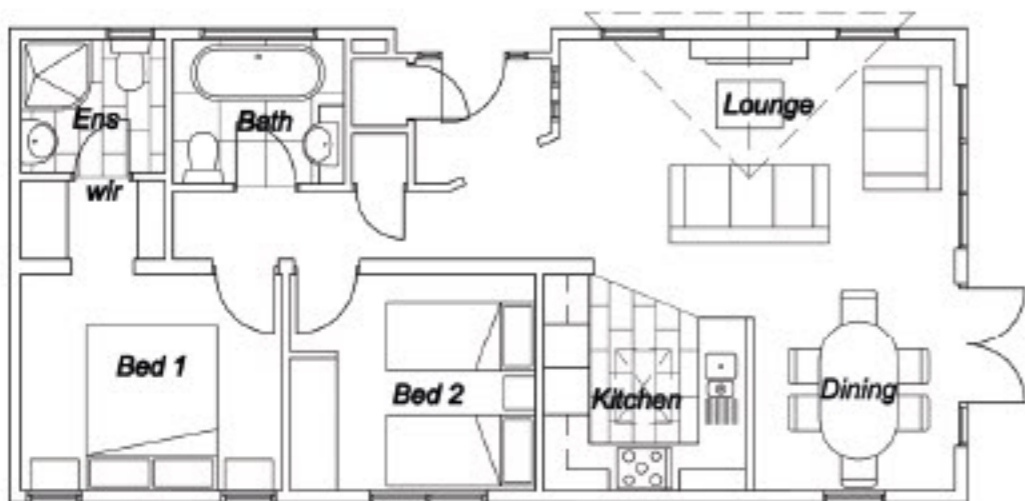
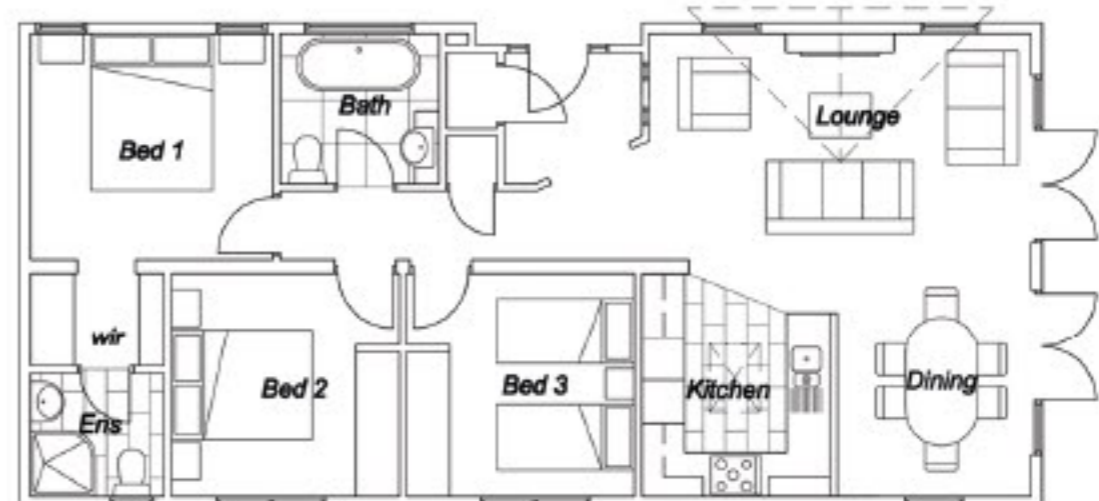


WILLOW LODGE 40 x 22 ft



WILLOW LODGE 40 x 20 ft



WILLOW LODGE 46 x 22 ft

Interior

- Constructed to BS 3632
- Condensing combi gas boiler
- 5 Ring gas hob, built in double electric oven & microwave
- Ultra gloss kitchen with granite worktop
- Integrated fridge/freezer, dishwasher and washer/dryer
- Chrome handles, switches and low energy spots
- Feature wallpaper to bedrooms
- Feature window and vaulted ceiling over fire
- 3+2+1 Lounge suite and coffee table
- Wall mounted focal fire
- Dining table & 6 chairs
- Mirrored slide robes
- Interior oak shaker doors
- Granite top vanity to family bathroom
- Half height tiling to bathroom & ensuite, with full height to showers
- Colour co-ordinated curtains, blinds, bedding and cushions
- Carpet/ laminate flooring throughout
- Chrome towel rail to bathroom & ensuite
- Velux rooflight to kitchen
- Flush internal joints

Exterior

- Optional Canexel or redwood cladding
- Wood effect uPVC doors and windows with low e glass
- Wood effect uPVC fascia & soffits
- Dormer gable over side door
- 800mm overhang to front gable & integrated spots
- Peak windows & doors to front gable
- Slot windows to lounge, dining & kitchen
- External powerpoint

Optional Extras

- Velux rooflights
- External tap
- External powerpoint

WILLOW LODGE

Features & Optional Extras:

The **WILLOW LODGE** comes in various widths and lengths to suit all sites and can be built in 2, 3 or 4 bedroom arrangements.